



Company : Woodside Energy Limited

Well : Somerset-1

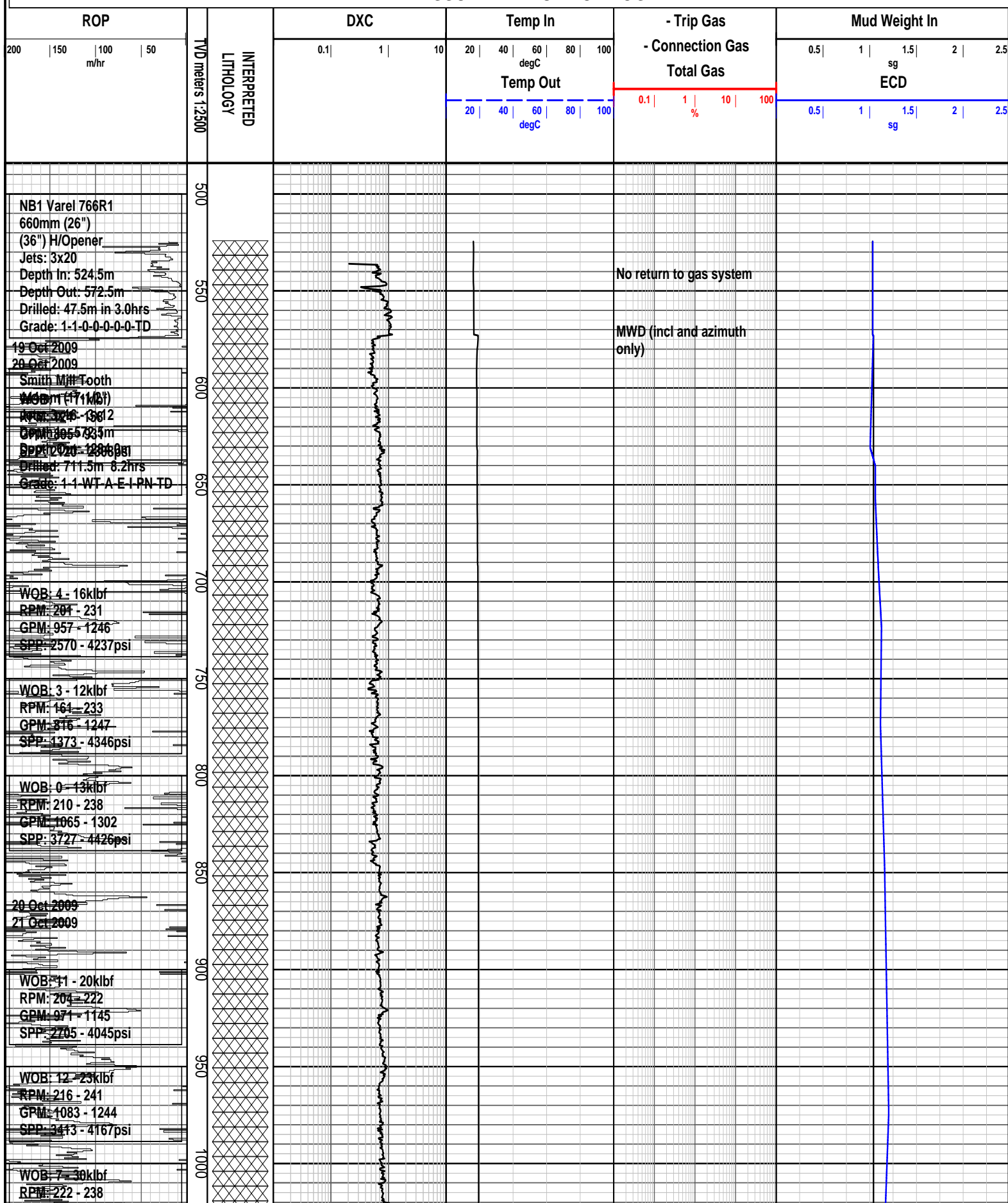
Interval : 484.00 - 2993.45 meters

Created : 13/Jan/2010 9:16:21 AM

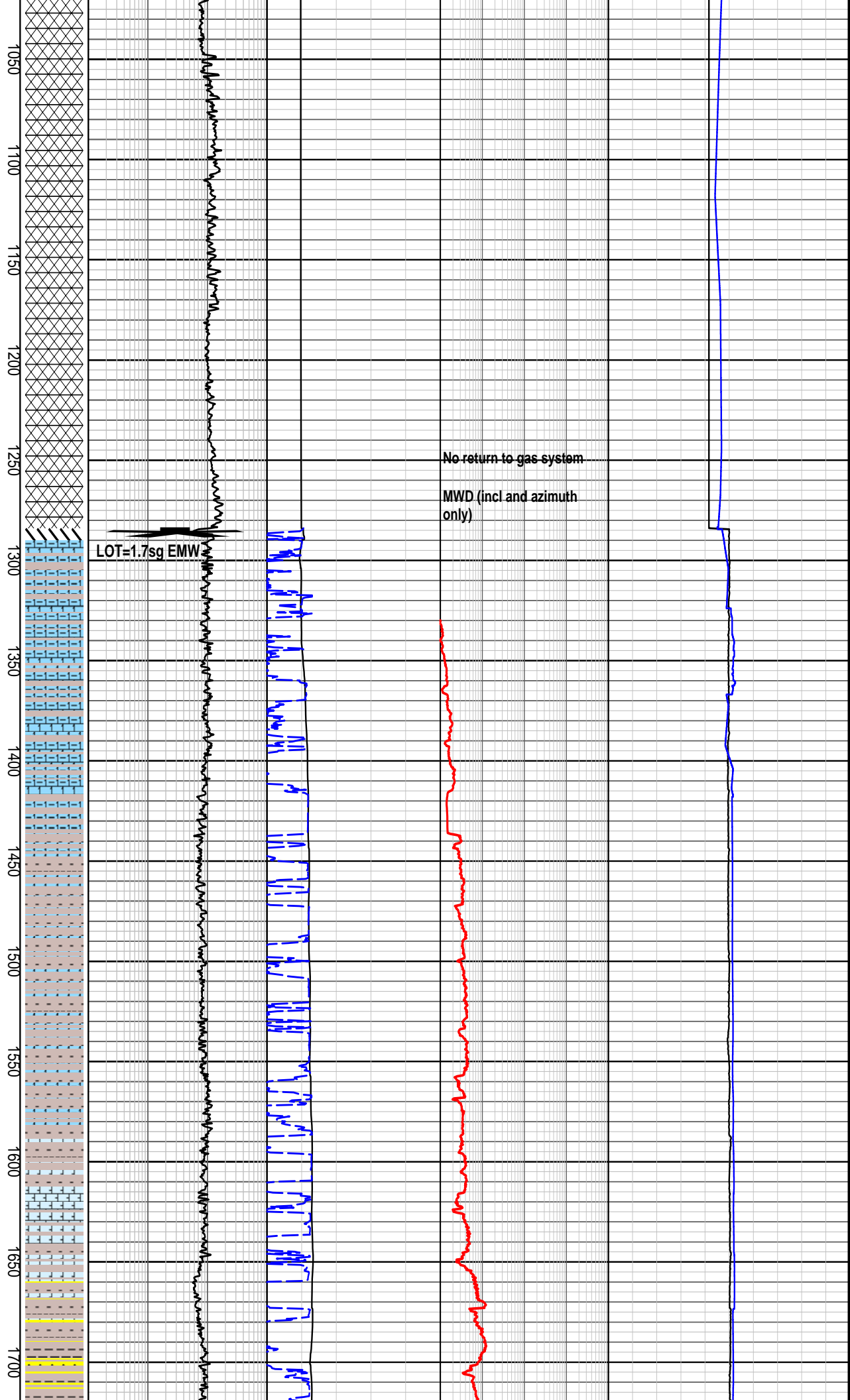


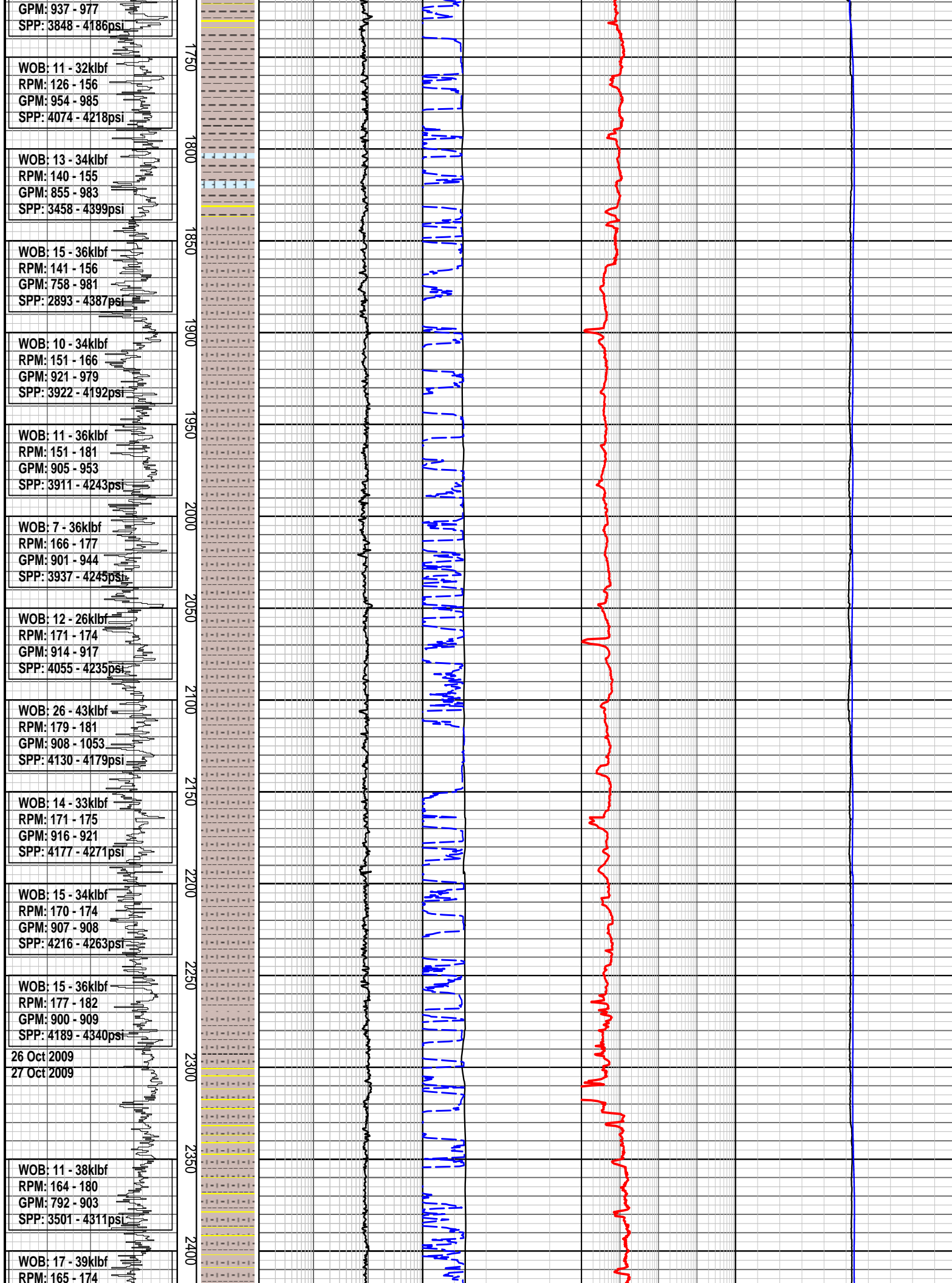
INTEQ

## PRESSURE EVALUATION LOG

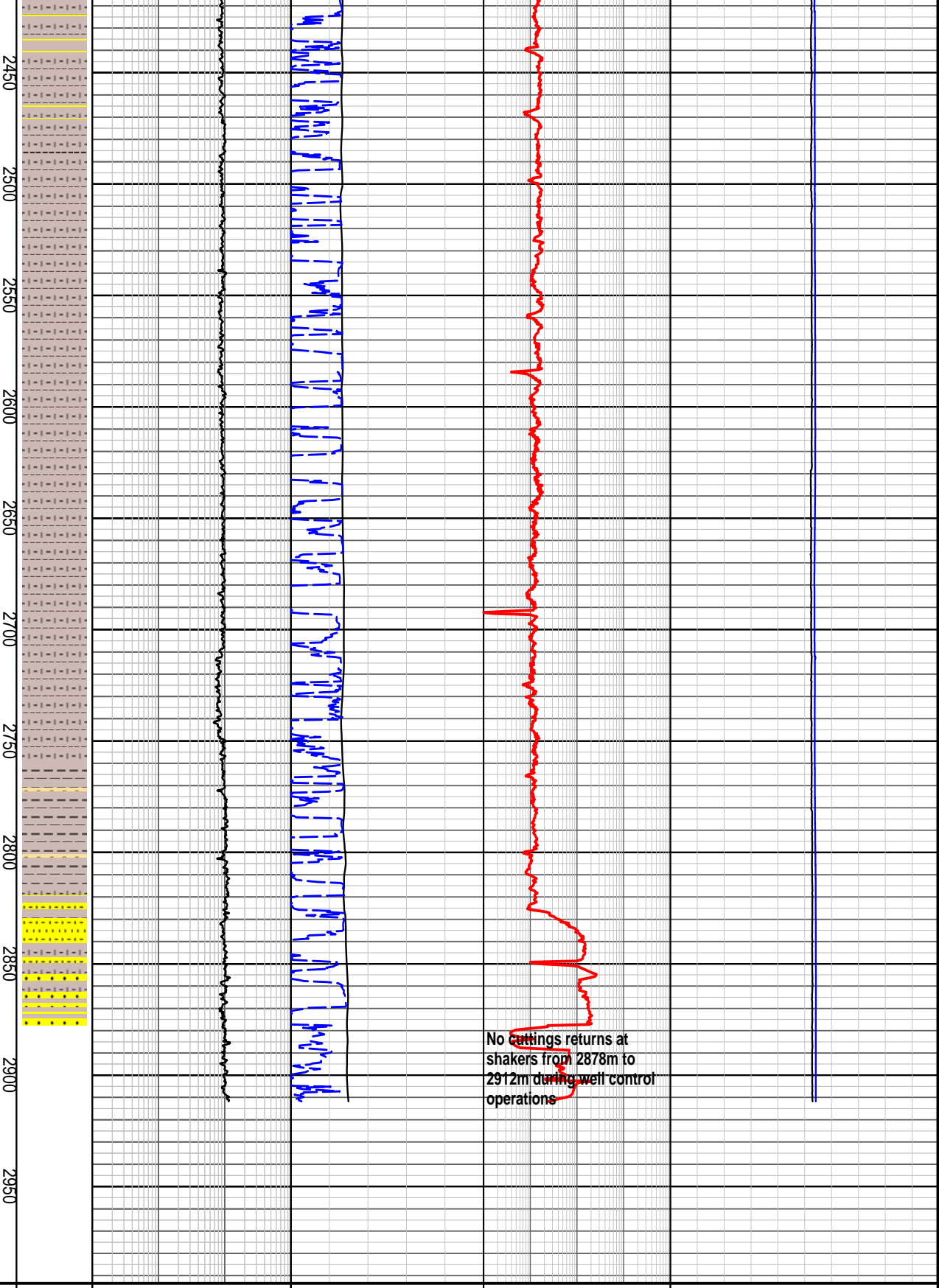


GPM: 1115 - 1303 SPP: 3580 - 4145psi
WOB: 16 - 46klbf RPM: 215 - 233 GPM: 1047 - 1203 SPP: 3355 - 4324psi
WOB: 27 - 60klbf RPM: 167 - 224 GPM: 766 - 1245 SPP: 1617 - 4404psi
WOB: 16 - 61klbf RPM: 170 - 224 GPM: 774 - 1166 SPP: 1498 - 4134psi
WOB: 23 - 61klbf RPM: 185 - 224 GPM: 1019 - 1155 SPP: 3441 - 4196psi
WOB: 26 - 50klbf RPM: 187 - 227 GPM: 1001 - 1183 SPP: 3353 - 4165psi
Smith PDC Bit 311mm (12-1/4") Jets: 10x12 Depth In: 1284.0m Depth Out: 2912.0m Drilled: 1628.0m in 42.4hrs Grade: 1-2-WT-S-X-1 CT-HP
WOB: 15 - 54klbf RPM: 109 - 177 GPM: 716 - 1060 SPP: 2151 - 4186psi
WOB: 16 - 34klbf RPM: 161 - 174 GPM: 1008 - 1063 SPP: 3916 - 4244psi
WOB: 4 - 49klbf RPM: 163 - 174 GPM: 1028 - 1039 SPP: 4095 - 4179psi
WOB: 11 - 26klbf RPM: 119 - 179 GPM: 1019 - 1030 SPP: 4088 - 4191psi
25 Oct 2009 26 Oct 2009
WOB: 19 - 44klbf RPM: 139 - 147 GPM: 977 - 1008 SPP: 4004 - 4293psi
WOB: 11 - 30klbf RPM: 90 - 153 GPM: 973 - 983 SPP: 4060 - 4140psi
WOB: 5 - 33klbf RPM: 131 - 144





GPM: 861 - 879 SPP: 4192 - 4317psi
WOB: 20 - 35klbf RPM: 161 - 166 GPM: 847 - 884 SPP: 4161 - 4228psi
WOB: 24 - 34klbf RPM: 163 - 173 GPM: 839 - 865 SPP: 4139 - 4331psi
WOB: 22 - 33klbf RPM: 167 - 177 GPM: 840 - 864 SPP: 4162 - 4352psi
WOB: 19 - 33klbf RPM: 168 - 175 GPM: 834 - 854 SPP: 4203 - 4339psi
WOB: 19 - 33klbf RPM: 168 - 175 GPM: 834 - 854 SPP: 4203 - 4339psi
WOB: 18 - 37klbf RPM: 172 - 183 GPM: 823 - 847 SPP: 4145 - 4383psi
WOB: 10 - 35klbf RPM: 172 - 184 GPM: 827 - 840 SPP: 4299 - 4386psi
WOB: 19 - 36klbf RPM: 170 - 181 GPM: 815 - 836 SPP: 4117 - 4377psi
WOB: 20 - 37klbf RPM: 171 - 185 GPM: 702 - 843 SPP: 3615 - 4269psi
WOB: 18 - 37klbf RPM: 172 - 184 GPM: 815 - 822 SPP: 4212 - 4274psi



No cuttings returns at  
shakers from 2878m to  
2912m during well control  
operations

PRESSURE EVALUATION LOG																												
ROP				TVD meters 1:2500	INTERPRETED LITHOLOGY	DXC			Temp In					- Trip Gas - Connection Gas Total Gas			Mud Weight In											
200	150	100	50			0.1	1	10	20	40	60	80	100				0.5	1	1.5	2	2.5							
m/hr									degC								sg											
									Temp Out								ECD											
										20	40	60	80	100	0.1			1	10	100	0.5			1	1.5	2	2.5	
										degC								%						sg				